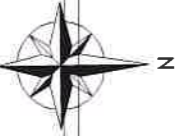




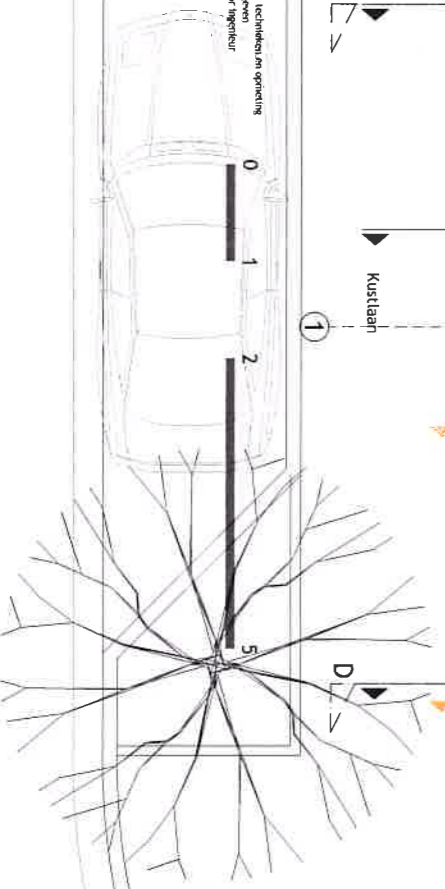
PROJECT ARCHITECTS

Kaiveerdijk 179 | B-8300 Knokke-Heist | T 050 63 07 70 | F 050 63 07 77 | info@projectarchitect.be | www.projectarchitect.be

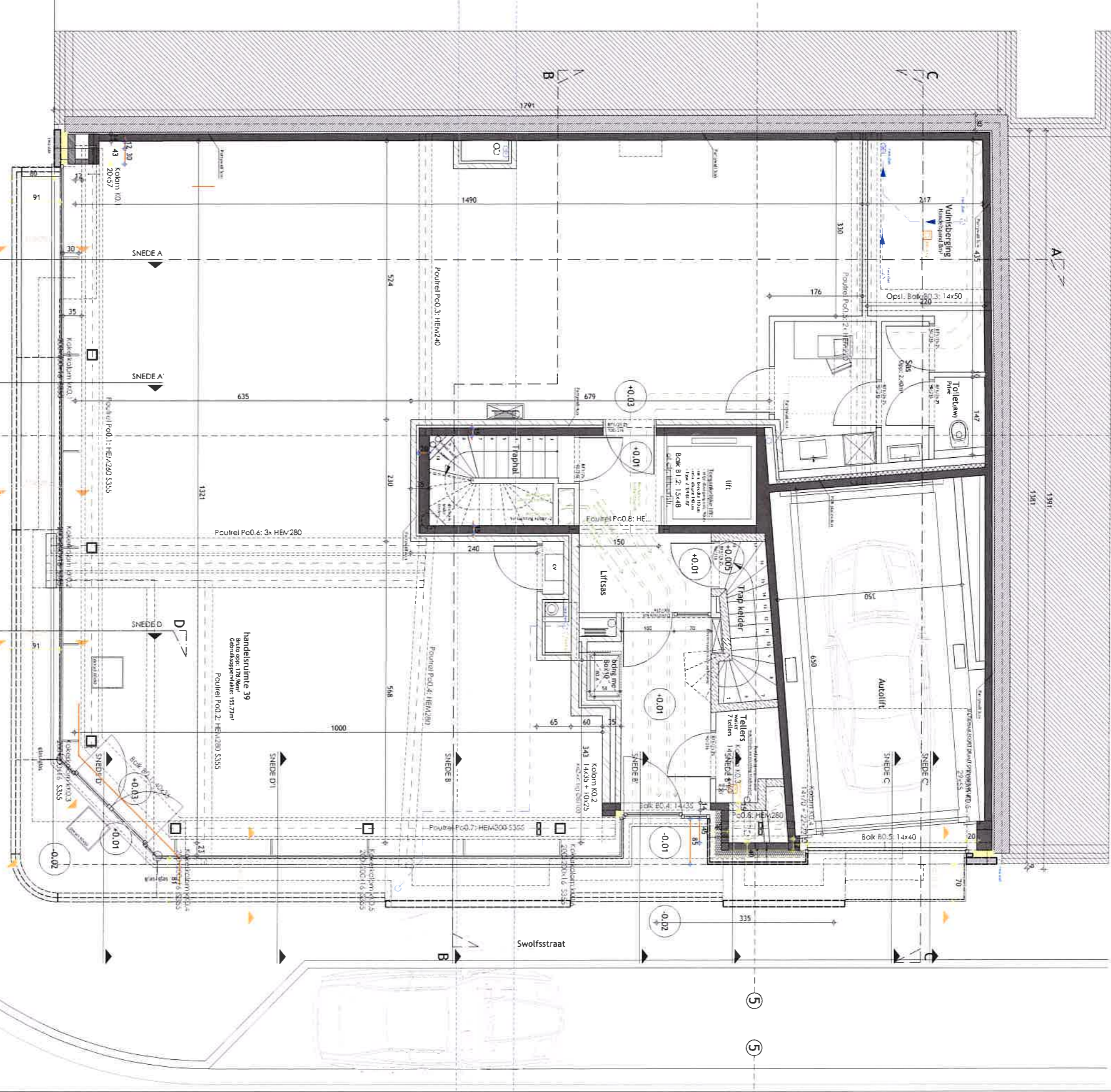
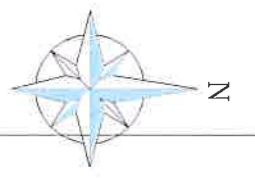


Getijkvloers
Bruto opp: 244,78m²
Netto opp: 178,99m²
Aantal vloeren: 2
Aantal m² vloeroppervlakte: 155,72m²
Plaats en aantal kolommen te bepalen door ingenieur

Kustlaan



10



W.I.J. KLINGEN

Handtekening van de Architect

Plattegrond van de handtekening van de Architect

Scale 1/75

Date 17 07 2020

res. ELITE

Swolfsstraat 16